







We offer seating in two styles, the first shown above for younger children couples well with the cloverleaf style table. The second style is the ladderback and while the style in the remaining pictures is the same the chairs fill a variety of functions. The upper chair is sized to fit smaller children and as with the upper chair can be used with the cloverleaf table.



The middle picture is the standard ladderback chair and can be produced with a variety of chair heights to suit the age of the children.



The bottom chair was designed to be used as a step between a highchair and a regular chair.

These chairs are all CNC cut from Baltic Birch plywood, and can be shipped as flat packs for you to finish or finished ready for you to assemble.



Tables whether picnic, sensory, art or classroom we a variety for you to choose from.



Sensory tables constructed using solid lumber tops and legs, sides of Baltic Birch.



Toddler/Preschool tables sized to the application.



Recently completed pair of tables for a family grouping classroom set up. Tables are conected to each other in normal use but can be disconnected for moving or to be used seperatley.



“Cloverleaf” tables made for infant rooms in sizes to suit two or four children.



Round or half round tables these are 5' [1520mm] in diameter, heights to suit application.



60 x 30x 15”  
1520 x760 x380mm  
unit no partitions.



60 x 30 x 15”  
1520x760x380mm  
partitioned unit  
these can be placed  
to suit purchaser.



‘L’ shaped corner  
shelving unit



Wall mount  
storage unit,  
PLEASE note these  
require a robust  
wall mount system

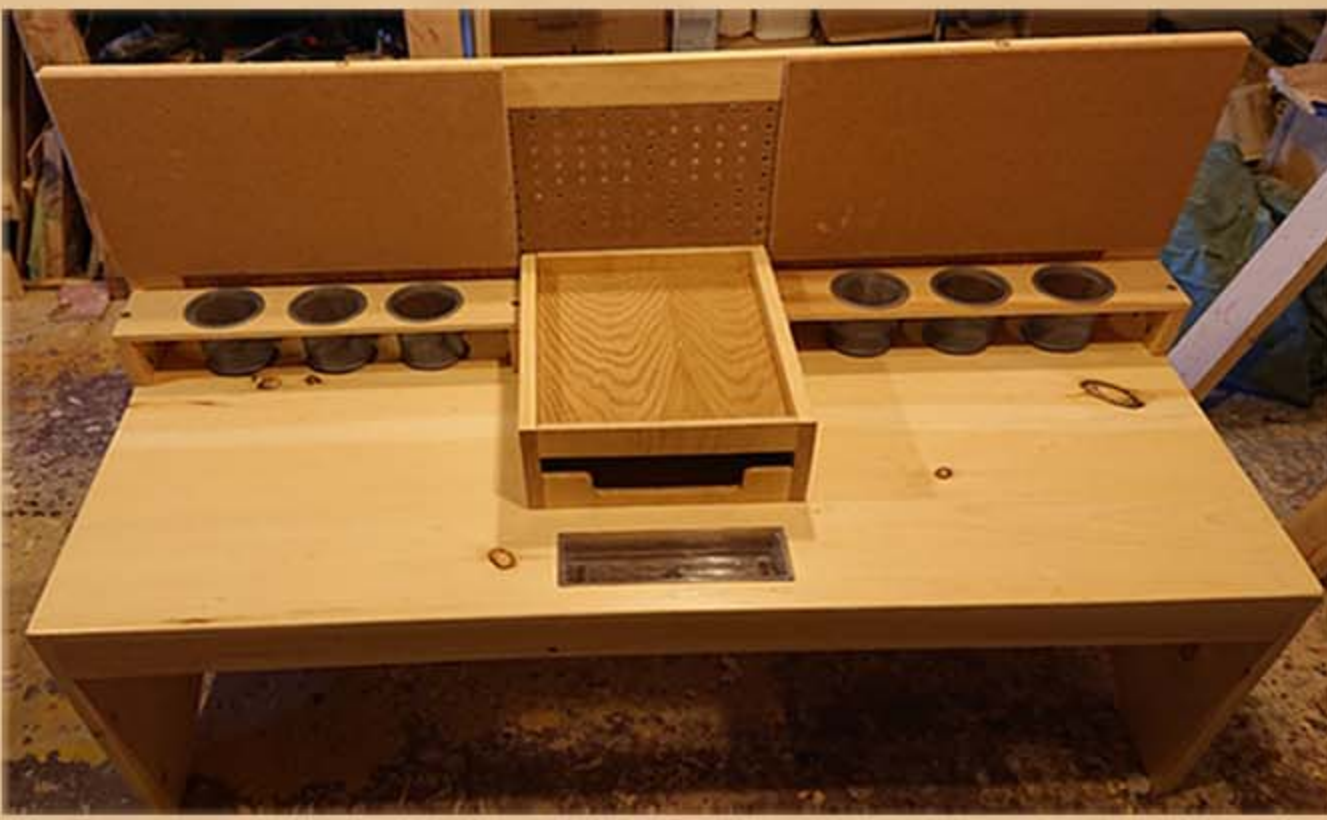
We have constructed a variety of shelving solutions from simple wall shelves to hold books, coats, a fan or radio to larger units designed to sit on the floor for classroom storage to an 18 place wall mount unit. The middle unit below was used to convert simple wood kitchen tables into work stations.







Toy storage, available in a variety of shapes and sizes with wheels to allow for easy movement.



Art centre for two children, with centre paper storage, cork and pegboard back, art supply cups at back and in front of paper storage.



Drying rack for children's artwork with 9 slide out shelves, this unit is mounted on wheels and was designed to fit under a shelf in a closet.



Wall mount easel, width can be adjusted to fit the location or number of users. These are normally equipped with clipboard type holders to hold sheets of paper in place, bottom trough to hold paint and catch the inevitable spills.



We have had a couple of opportunities to build the outdoor items pictured a balance bridge that can be taken apart for storage. Pictured as well is a seat built to wrap around a tree, it is free standing to prevent damage to the tree.



Steps to allow children to climb up to counter for diaper changes. Steps are removable.

If you do not see what you are looking for on these pages sent us a note and we let you know what we can do to meet your needs.

All of our products are made using Baltic Birch plywood, other types as the situation may require, we do not use mdf or other such products.



Kitchen helper, steps allows children to access to counter tops. There are two steps which are removable and can be slid under the deck when not in use. Deck can be lowered as the child grows, safety bar can be removed. Plans for this unit for those who would like to build their own are in the works and will contain full size patterns for the side pieces.



Table with room for a chair, made for a client's bed/sitting room.



Round tables in diameters to 5ft. [1,52m], heights can be varied from coffee table to bar table heights, these are flat pack tables which can be purchase finished or unfinished. Simple slip together assembly for making storage quick and easy, can be made of Baltic Birch or marine plywood for outdoor use.

The rendering of the family group table layout shows the type of approval drawing you will receive before building of any custom orders begin.

To get an indication of our pricing check out our web site, for a quote, email us a list of what you are looking for.



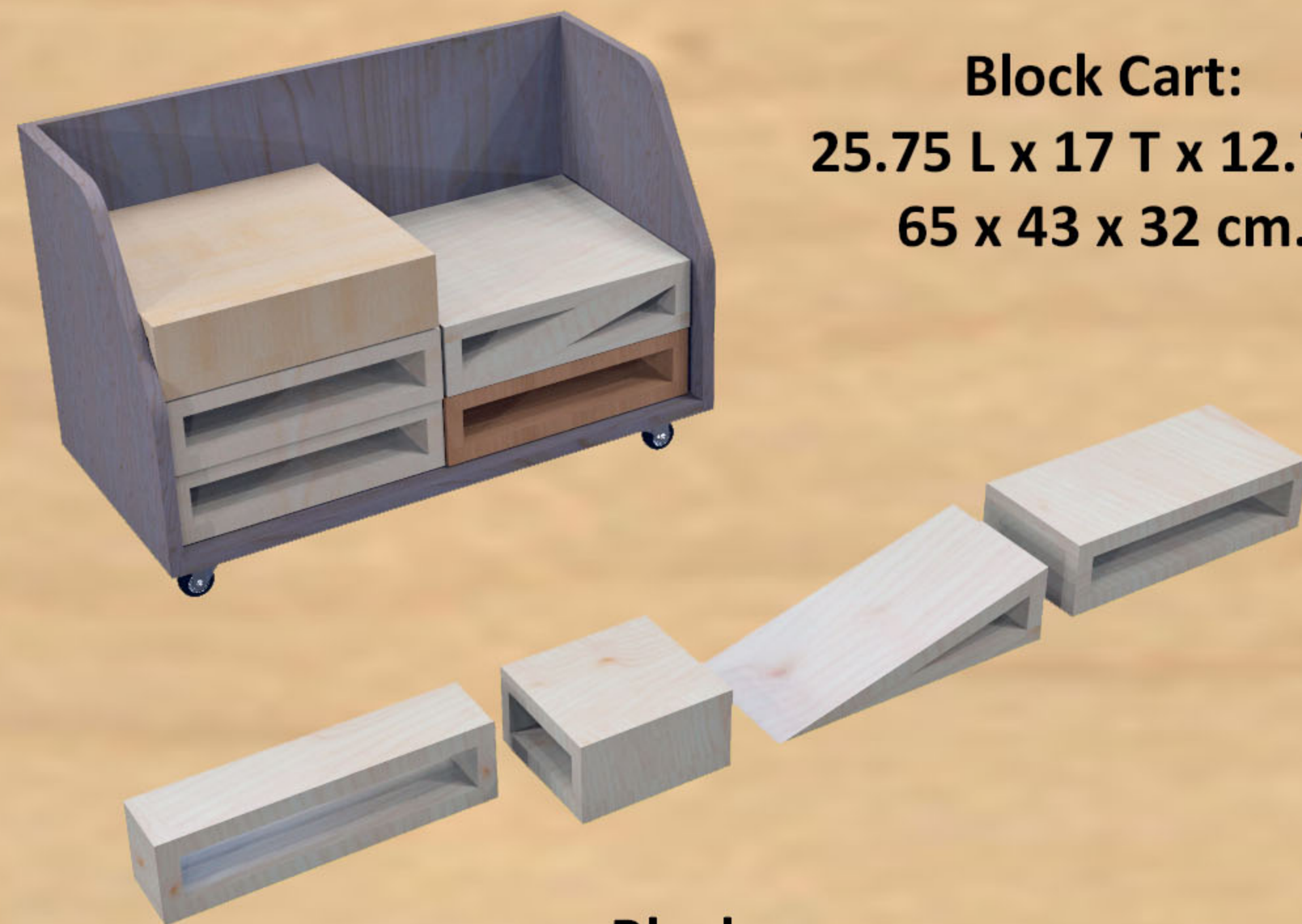
We recently had the opportunity to put together a proposal that included the chance to add some new designs to our catalogue, these are featured on this page.

Dress Up Centre: 32 x 14 x 25"  
81 x 36 x 63.5 cm.

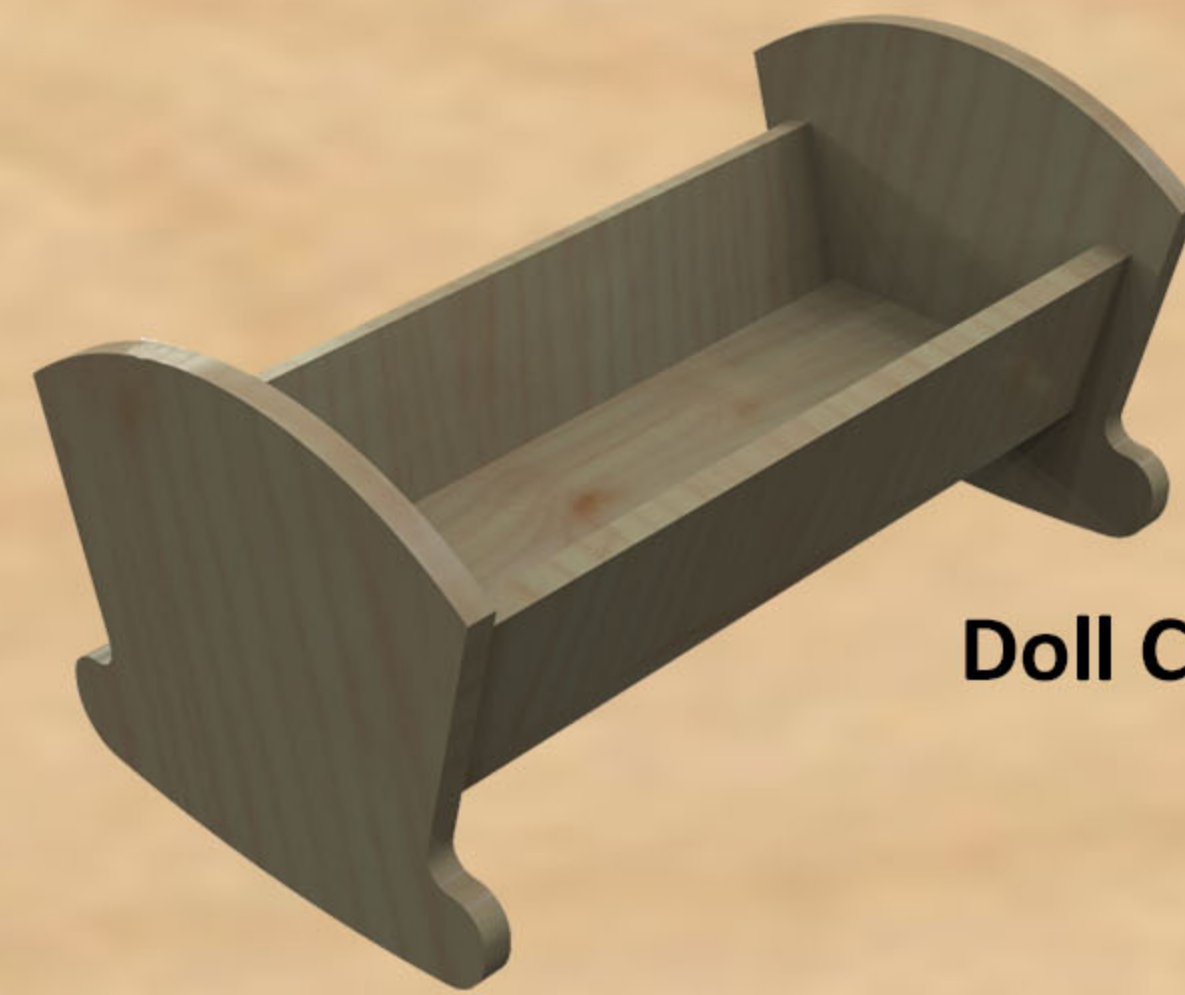


Dress up Centre available in two versions one with mirrored end one without coat hooks can be under top shelf or on face of shelf.

Block Cart:  
25.75 L x 17 T x 12.7" D  
65 x 43 x 32 cm.



Blocks:  
6 to 12 inches long/ widths 3 1/4 or 5 1/2 " wide  
152 to 304 cm long/ 8 or 14 cm wide



Doll Cradle: 20 L x 11.5 W X 10.5" H  
51 x 27 x 29 cm.



Doll High Chair: 26 T x 14 W x 14.75 D  
66 x 36 x 37.5 cm.  
Dimensions are to outer edges of tray



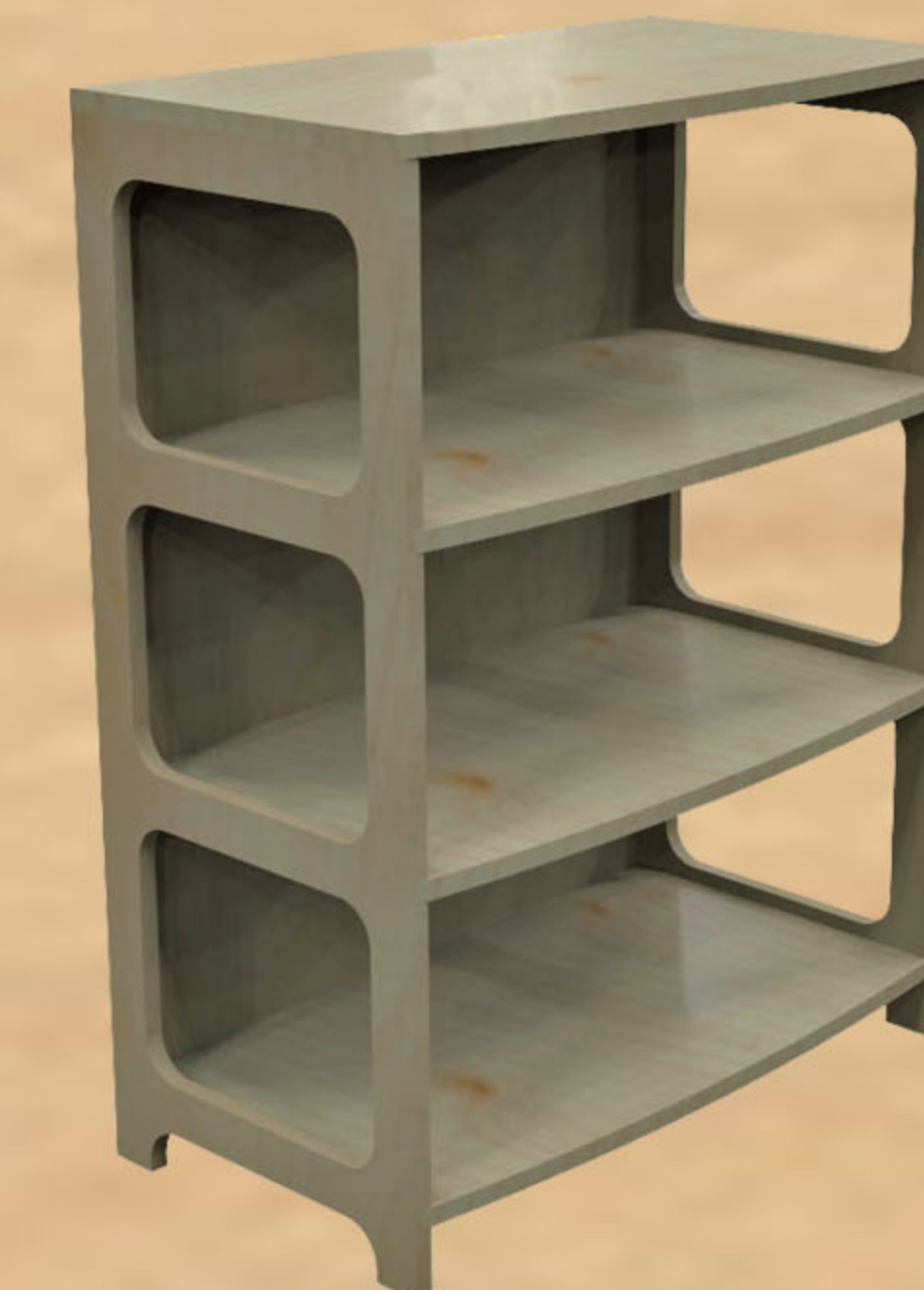
Fireplace Unit:  
54"W x 36" T x 19"D  
137 x 91 x 48 cm.

NOTE: As with all the other items detailed in this brochure because they are built to order sizes can be altered to suit your application.

Toddler Bench Seat:  
Seat Height 6.5" Width 40" Height 14.75 Seat Depth 6.5"  
16.5 x 102 x 38 x 16.5 cm.



Table 21 H x 48" L x 30" W  
53 x 122 x 76 cm.  
Benches Seat height 12" x 38" L x 23.25" Tall  
30 x 97 x 59 cm.



Shelving Unit:  
40" T x 30" W x 17" D  
122 x 76 x 43 cm.